

MxCalc 10bII

for PocketPC

Version 1.0
User Guide

Product of:-

3GR Technologies

For Installation information & Sales/Support contacts refer the Read Me file.

Contents

1.	Introduction -Install/Uninstall.....	3
2.	Application Overview.....	4
3.	Error Messages.....	5
3.	List of Features	6
4.	Reference.....	6
5.	How to Register.....	7

◆ Install/Uninstall

Installation.

- You need to have MS ActiveSync Software on your device and make sure your device is connecting with Desktop PC.
- Run **setup** and follow instructions.
- When finished, go to Start Menu>>Program, here you will see the Icon of MxCalc 10bII

.Net Framework

Download & install the .Net framework from the following link in case the system prompts for missing runtime files.

- **PocketPC (.Net Compact Framework)**

<http://www.microsoft.com/downloads/details.aspx?familyid=9655156b-356b-4a2c-857c-e62f50ae9a55&displaylang=en>

- **Desktop**

<http://www.microsoft.com/downloads/details.aspx?FamilyID=0856eacb-4362-4b0d-8edd-aab15c5e04f5&displaylang=en>

2.2 Uninstallation.

To remove the product from your Pocket PC:

- Go to **Start menu >> Settings**
- Select **System** Tab and tap on **Remove Programs**
- Select MxCalc 10bII from the list and tap on the Remove button
- Choose **"Yes"** to confirm removing

Application Overview

Differences in operating MxCalc 10bII compared to HP 10bII.

1. In arithmetic, MxCalc 10bII shows the operands and operators.
2. You can store an initial cash flow plus additional 19 cash flow groups.
3. Results from TVM and statistics calculations are labeled.
4. MxCalc 10bII displays in fixed decimal format. The internal precision used inside the calculator is not affected by the Displayed format on the screen.
5. More descriptive error messages (See the list below)
6. Data entry using the thousand [000] and hundred [00] buttons.

◆ Error messages

Cash Flows > 20 empty list	Attempted to enter more than 20 cash flow groups (initial cash flow plus additional 19 cash flow groups). Attempted to perform a calculation with no data.
inputs caused ÷0	Calculation has caused a division by zero.
invalid input error: 0	Attempted to store a value outside the valid range; or on some cases the expression entered was incomplete. On some cases the expression entered was caused unknown error.
error: 0^x ; x<0	Attempted to raise zero to a negative power.
All Clear	Memory has been erased.
error: log(x) ; x < 0	Attempted to take log of a negative number.
error: log(x) ; x = 0	Attempted to take log of zero.
error:y^x;y<0,x non int	Attempted to raise a negative number to a noninteger power.
error:sqrt(x) ; x<0 input caused math error	Attempted to take square root of a negative number On some cases the expression entered was caused arithmetical error.
error: over flow	Attempted to do a TVM calculation where the periodic interest is less than -100%.
many or no solutions	Solution to Financial Value may or may not exist.
n!; n < 0 or n noninteger	Attempted to calculate a factorial of a noninteger or negative number.

◆ Features of MxCalc 10bII

- Algebraic Entry System Logic
- Quickly identify cash flows and amortization values.
- Statistical analysis
- Standard deviation, mean & weighted mean
- Linear regression and linear estimation
- Forecasting, correlation & co-efficient
- Total, Sx , Sx^2 , Sy , Sy^2 , Sxy
- +, -, *, ÷, 1/x, In x, ex, yx, n!, x^2
- Margin as a percent of price.
- Mark-up as a percent of cost price
- Variable compounding
- Cash flow analysis
- Time Value of Money (TVM)
- Net Present Value (NPV)
- Internal Rate of Return (IRR)
- Automatic constant
- 3 Key memory
- 19 Storage registers

◆ Other Reference Manuals

"HP-10B Business Calculator Owner's Manual" (1994). Hewlett-Packard Company, Corvallis, Oregon, USA.

"HP 10BII Business Calculator Owner's Manual" (2000). Hewlett-Packard Company, ACO, Victoria, Australia.

* *HP-10B and HP-10BII are trademarks of the Hewlett-Packard Company.*

◆ How to Register

Evaluation version will expire after 15 uses. Please register.

Serial

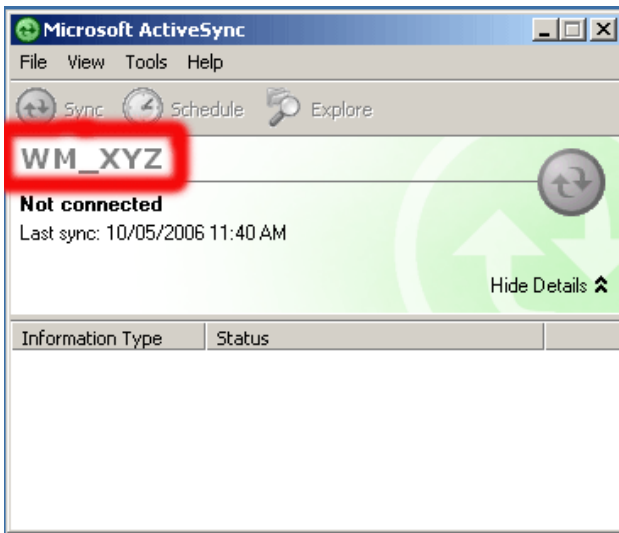
Key

Enter Key

Developed by 3GR Technologies.

InputPanel

- To register you will need the **ActiveSync ID** or **Owner Name** or **Serial #**.
- You can locate the ActiveSync ID as shown below. In the example given below **'WM_XYZ'** is the ActiveSync ID.
- The Serial # is a 19 digit # located in the registration form as seen in the example.
- Owner Name is the name in the Owner Information found in the Today Screen.



To find the Owner Name Today's Screen or by clicking on **Settings-->Personal-->Owner Information -->Name** If you have not set the owner name, please set it & supply when requested

If you do not have the Microsoft ActiveSync software (Usually a CD is packaged in the PocketPC box) installed, please install it. To download visit the following page <http://www.microsoft.com/windowsmobile/activesync/default.msp>

If you purchase MxCalc 10bII, you will receive a personal registration code to unlock the 15 uses limitation in the trial version. Please enter this registration code into the calculator as follows.

1. Press [SHIFT][EXIT] which are the [SHIFT] button, [EXIT] button. This will open a registration window.
2. To Register MxCalc 10bII please follows the following Steps:
 - Open the registration form.
 - Enter the registration code in the key input area.
 - Select 'Enter key' to complete your registration.