

MxClock for PocketPC

Version 1.0
User Guide

Product of:-

3GR Technologies

For Installation information & Sales/Support contacts refer the Read Me file

Contents

1	Installation/Uninstallation.....	3
2	Overview.....	4
3	Registration.....	6

1. Installation/Uninstallation

Requirements:

- You need to have MS ActiveSync Software/ Device center on your Desktop and make sure your device is connecting with Desktop PC.
- **.Net Framework**

Download & install the .Net framework from the following links in case the system prompts for missing runtime files.

- **PocketPC (.Net Compact Framework)**

<http://www.microsoft.com/downloads/details.aspx?familyid=9655156b-356b-4a2c-857c-e62f50ae9a55&displaylang=en>

- **Desktop**

www.microsoft.com/downloads/details.aspx?FamilyId=10CC340B-F857-4A14-83F5-25634C3BF043 - 33k

Steps to Install MxClock program.

- Execute MxClock.exe and follow instructions. ONLY IF prompted to install the .Net Compact Framework on your POCKETPC device execute the Dot_Net_Compact_Framework_2.exe to start the installation of .Net Compact Framework runtime files.
- When finished, go to Start Menu>>Program, here you will see the Icon of 'MxClock'.

Steps to Uninstall MxClock program.

To remove the product from your Pocket PC:

- Go to **Start menu >> Settings.**
- Select **System** Tab and tap on **Remove Programs.**
- Select MxClock from the list and tap on the Remove button.
- Choose **"Yes"** to confirm removing.

2. Overview

World clocks with the Home clock. You can view the Date, Time, Day & Temperature with Icon for each city.

Note: The Home clock always displays your system time.

Switching between cities/ changing a city.

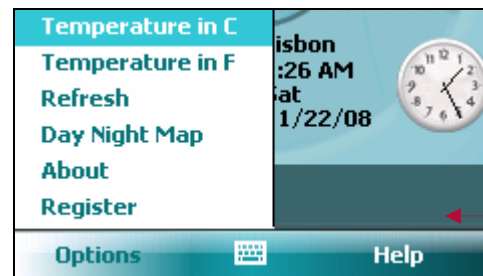
- You can change the city by Tapping on the city and selecting a city from the list.



Tap on city name to select a different city.

(3.1)

Settings



(3.2)

- You can change the temperature measurement units by selecting the either Temperature in Celsius or Temperature in Fahrenheit.
- Tap on refresh to get the current date, time and weather information.
- Tap on World Day and Night Map to view the day and night map.

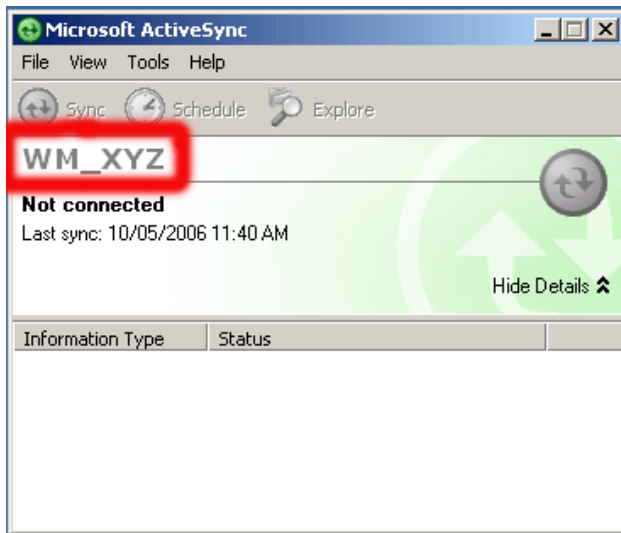
Note: After selecting the measurement unit i.e. Celsius or Fahrenheit, you need to refresh to apply the changes.

3 Registration



- To register select Register from options.
- To register you will need the **ActiveSync ID** or **Owner Name** or **Serial #**.
- You can locate the ActiveSync ID as shown below. In the example given below **'WM_XYZ'** is the ActiveSync ID.
- The Serial # is a 19 digit # located in the registration form as seen in the example.
- Owner Name is the name in the Owner Information found in the Today Screen.

In the example given below **'WM_XYZ'** is the ActiveSync ID.



To find the Owner Name Today's Screen or by clicking on **Settings-->Personal-->OwnerInformation -->Name**

If you have not set the owner name, please set it & supply when requested.

If you do not have the Microsoft ActiveSync software (Usually a CD is packaged in the PocketPC box) installed, please install it.

To Download Device center (Windows Vista) visit the following page.

<http://www.microsoft.com/windowsmobile/en-us/help/synchronize/device-center.msp#download>.