



User Guide

- Version 1.08 for Windows Mobile Classic/Professional based Pocket PC (Touch Screen)

For Installation information & Sales/Support contacts refer the Read Me file

Contents

1	Overview.....	3
2	Creating/Deleting Feeds.....	4
3	Updating Channels	6
4	Registration.....	7
5	Installation/Uninstallation.....	8
6	Contact Information.....	8

1 Overview



Icon View

Tap here to add a new Feed.



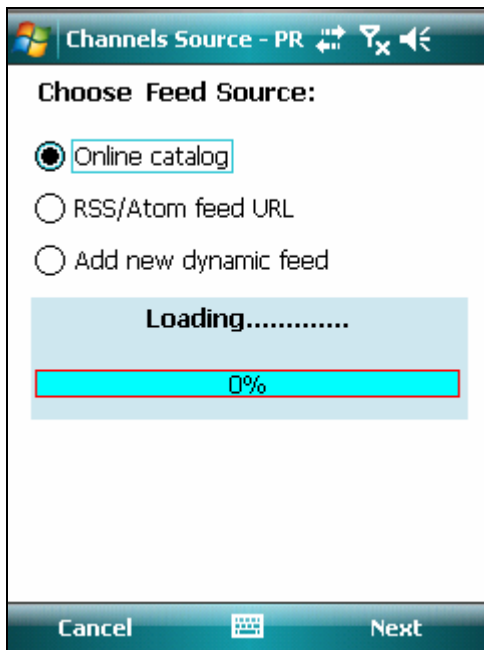
xx List View

Indicates the number of articles/feeds in the channel

Menu.

Note: Switch between the List view and Icon view using the Menu.

2. Creating new Channels



Add channels to start with using PRPNews. Following are the steps to add a new Feed.

To add a new channel:

- Select new from the menu.
- Select Feed Source.

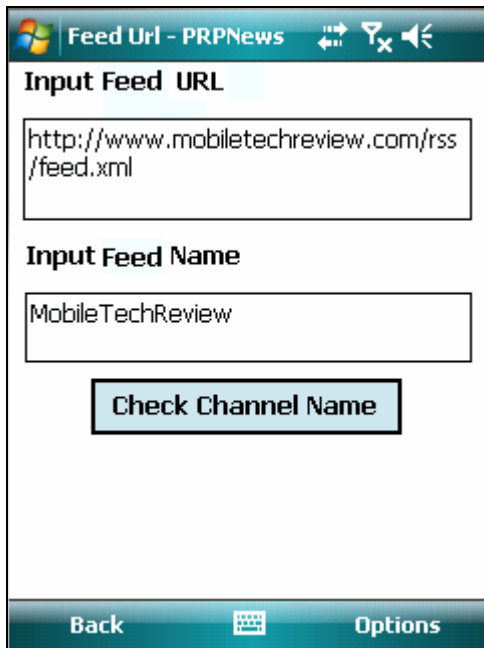
Online catalog:



Online Catalog consists a list of Feeds based on popularity and different categories and subcategories. You can also add feeds other than preloaded with the package as shown in the '**RSS/Atom feed URL**' section.

- To select a channel, check the channel that you want. You can choose multiple channels at one time.
- After selecting the channels, select Options -> Finish from the menu.

RSS/Atom feed URL



Add more feeds other than the comprehensive collections of popular feeds available in the Online Catalogue.

Select “**RSS/Atom feed URL**” from the Feed Source screen. Enter the Feed URL & provide a Name for the Feed.

Tap on ‘**Check Channel Name**’ button to retrieve the name for the channel.

Tap on options -> Finish.

Dynamic feed



Dynamic feeds from Google, Altavista etc. Simply select the Provider & enter the search topic. All the feeds related to the topic will be available.

Steps :-

- Select provider.
- Enter a Query i.e. Enter the keyword related to the topic of your interest e.g. sports, business etc.
- Provide a name for the new feed.
- Tap on Options -> Finish.

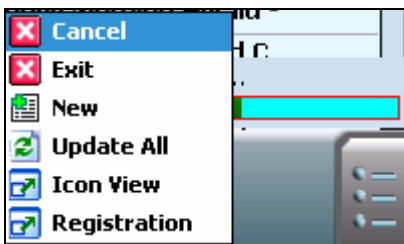
Deleting Feeds

To delete a feed use the context menu i.e. Tap and Hold on the feed and select Delete.

3. Updating Channels

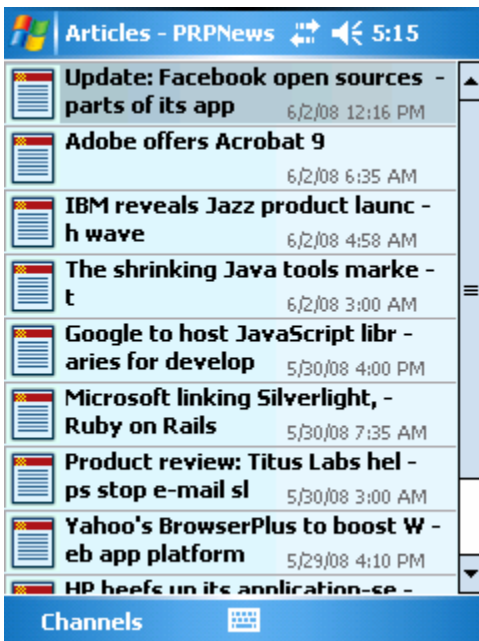


After adding a new feed, update the feed in order to get the latest articles/feeds. You can update a single feed by using the context menu (Tap and Hold on the channel).



Update all the feed by selecting Update All option from the Menu.

Note: During the update process you will be able to continue reading the offline articles.



Article List View



Article View

4. Installation/Uninstallation

Requirements:

- MS ActiveSync Software or Mobile Device Center 6.1 on your desktop PC and make sure your device is connecting with Desktop PC.
- **.Net Framework**

To install the .Net Framework, check the NetCF option while installing the program, selected by default.

Alternately Download & install the .Net Framework from the following links in case the system prompts for missing runtime files.

- **Pocket PC (.Net Compact Framework)**

<http://www.microsoft.com/downloads/details.aspx?familyid=9655156b-356b-4a2c-857c-e62f50ae9a55&displaylang=en>

- **Desktop (.Net Framework)**

<http://www.microsoft.com/downloads/details.aspx?FamilyID=0856eacb-4362-4b0d-8edd-aab15c5e04f5&displaylang=en>

Steps to Install PRPNews.

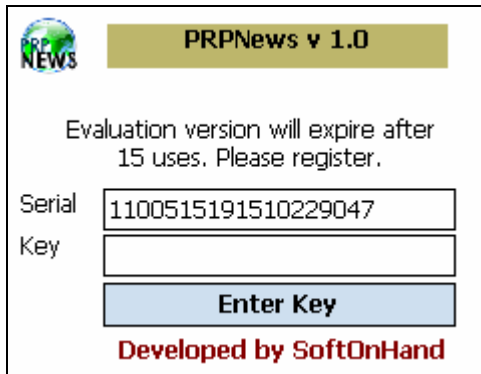
- MS ActiveSync Software or Mobile Device Center 6.1 on your device and make sure your device is connecting with Desktop PC.
- Run **PRPNewsPPC.exe** and follow instructions.
- When finished, go to Start Menu>>Program, here you will see the Icon of PRPNews.

Steps to Uninstall PRPNews program.

To remove the product from your Pocket PC:

- Go to **Start menu >> Settings.**
- Select **System** Tab and tap on **Remove Programs.**
- Select PRPNews from the list and tap on the Remove button.
- Choose **"Yes"** to confirm removing.

5. Registration



PRPNews v 1.0

Evaluation version will expire after 15 uses. Please register.

Serial

Key

Enter Key

Developed by SoftOnHand

Trial version of PRPNews is available. You can use this trial version up to 15 uses. After that you will have to register the product. Registration process is simple.

To Register PRPNews:

- Select Registration from the Menu.
- Enter the registration key provided to you using the key board.
- Tap on Enter Key.

6. Contact Info

Technical Support

For technical support, email us at support@softonhand.com.

General Information

For general information contact us at info@softonhand.com.

Sales Information

For assistance regarding sales email us at sales@softonhand.com