



## **User Guide**

- Version 1.08 for Windows Mobile Standard Smartphone (No Touch Screen)

For Installation information & Sales/Support contacts refer the Read Me file

---

## Contents

---

1	Overview.....	3
2	Creating/Deleting Feeds.....	4
3	Updating Feeds .....	6
4	Installation/Uninstallation .....	7
5	Registration.....	8
6	Contact Information.....	8

# 1 Overview



Indicates the number of articles/ Feeds in the channel

Menu.

List View

**Note:** Switch between the List view and Icon view using the Menu.



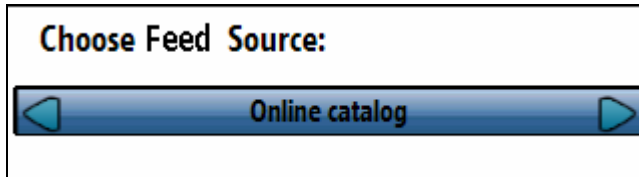
New

Options

---

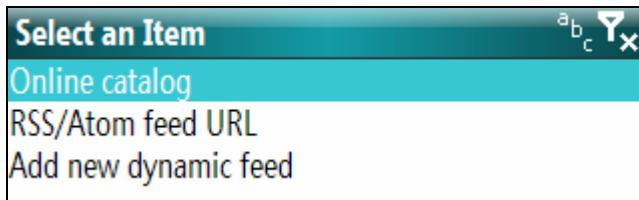
## 2. Creating new Feeds

---



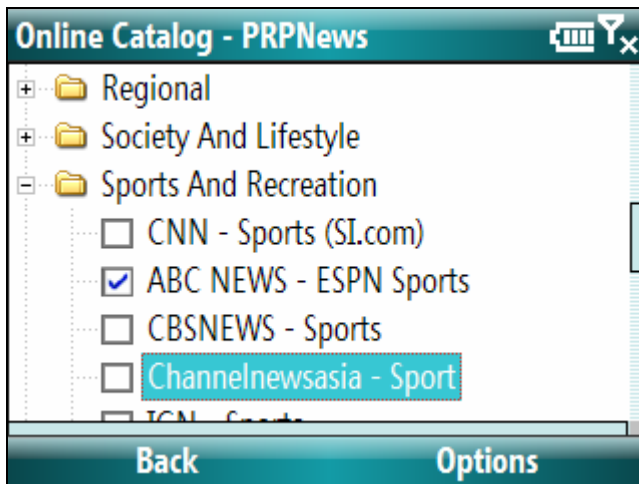
Add channels to start with using PRPNews. Following are the steps to add a new channel.

To add a new channel:



- Select new from the menu.
- Select Channel Source.
- Click on Next.

### Online catalog:



Online Catalog consists a list of Channels based on popularity and different categories and subcategories. You can also add feeds other than preloaded with the package as shown in the **'RSS/Atom feed URL'** section.

- To select a channel, check the channel that you want. You can choose multiple channels at one time.
- After selecting the channels, select Options -> Finish from the menu.

## RSS/Atom feed URL



Feed Url - PRPNews

Input Feed URL  
http://www.mobiletechreview.com/rss/feed.xml

Input Feed Name  
MobileTechReview

Check Feed Name

Back Options

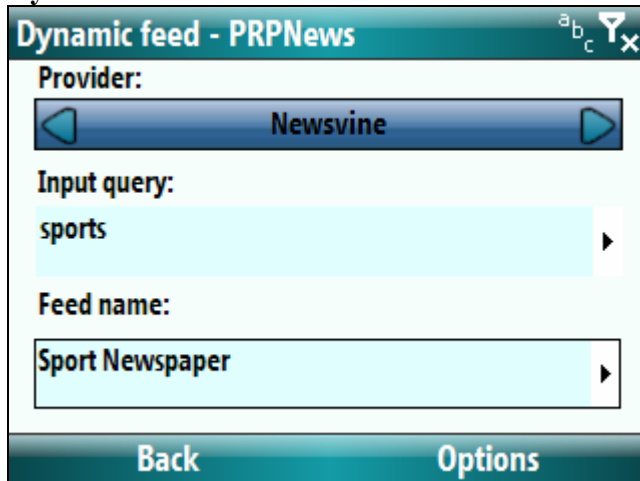
You can add more feeds other than the comprehensive collections of popular feeds available in the Online Catalogue.

Select “**RSS/Atom feed URL**” from the Channel Source screen. Enter the Channel URL & provide a Name for the Channel.

Click on ‘**Check Channel Name**’ button to retrieve the name for the channel.

Click on options -> Finish.

## Dynamic feed



Dynamic feed - PRPNews

Provider:  
Newsvine

Input query:  
sports

Feed name:  
Sport Newspaper

Back Options

Dynamic feeds from Google, Altavista ..... etc. Simply select the Provider & enter the search topic. All the feeds related to the topic will be available.

Steps :-

- Select provider.
- Enter a Query i.e. Enter the keyword related to the topic of your interest e.g. sports, business etc.
- Provide a name for the new feed.
- Click on Options -> Finish.

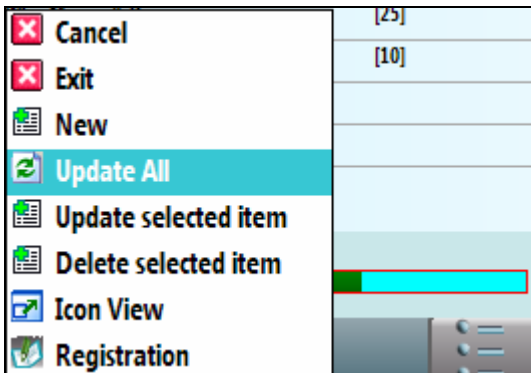
## Deleting Feeds

To delete a Feed, select Delete from the menu.

---

### 3. Updating Feeds

---



After adding a new channel, update the channel in order to get the latest Articles/Feeds.  
You can update a single channel Selecting Update selected Item.  
You can also update all the channels by selecting Update All option from the Menu.

**Note:** During the update process you will be able to continue reading the offline articles.



Article List View



Article View

---

## 4. Installation/Uninstallation

---

### Requirements:

- You need to have MS ActiveSync Software/Windows Mobile Device Center 6.1 on your desktop PC and make sure your device is connecting with Desktop PC.

- **.Net Framework**

To install the .net framework, check the NetCF option while installing the program, selected by default.

Alternately you can download & install the .Net Framework from the following links in case the system prompts for missing runtime files.

- **Standard (Smartphone) (.Net Compact Framework)**

<http://www.microsoft.com/downloads/details.aspx?familyid=9655156b-356b-4a2c-857c-e62f50ae9a55&displaylang=en>

- **Desktop (.Net Framework)**

<http://www.microsoft.com/downloads/details.aspx?FamilyID=0856eacb-4362-4b0d-8edd-aab15c5e04f5&displaylang=en>

### Steps to Install PRPWallet.

- You need to have MS ActiveSync Software or Windows Mobile Device Center 6.1 on your device and make sure your device is connecting with Desktop PC.
- Run **PRPNewsSP.exe** and follow instructions.
- When finished, go to Start Menu>>Program, here you will see the Icon of PRPNews.

### Steps to Uninstall PRPNews program.

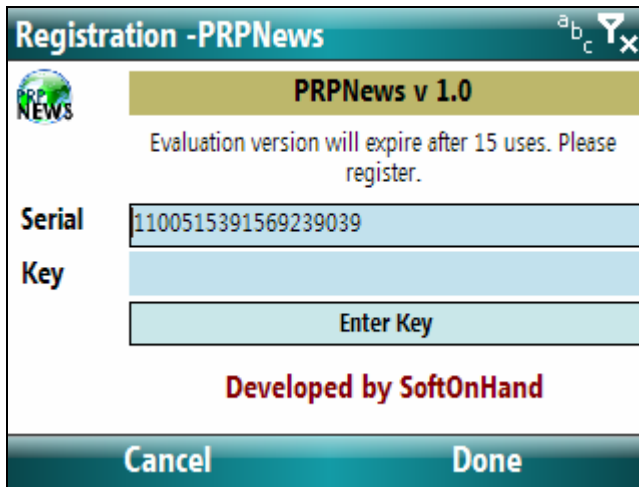
To remove the product from your device:

- Go to **Start menu >> Settings.**
- Select **Remove Programs.**
- Select PRPNews from the list.
- Click on **"Done"** to confirm removing.

---

## 5. Registration

---



Trial version of PRPNews is available. You can use this trial version up to 15 uses. After that you will have to register the product. Registration process is simple.

To Register PRPNews:

- Select Registration from the Menu.
- Enter the registration key provided to you using the key board.
- Click on Enter Key.

## 6. Contact Info

### Technical Support

For technical support, email us at [support@softonhand.com](mailto:support@softonhand.com).

### General Information

For general information contact us at [info@softonhand.com](mailto:info@softonhand.com).

### Sales Information

For assistance regarding sales email us at [sales@softonhand.com](mailto:sales@softonhand.com)